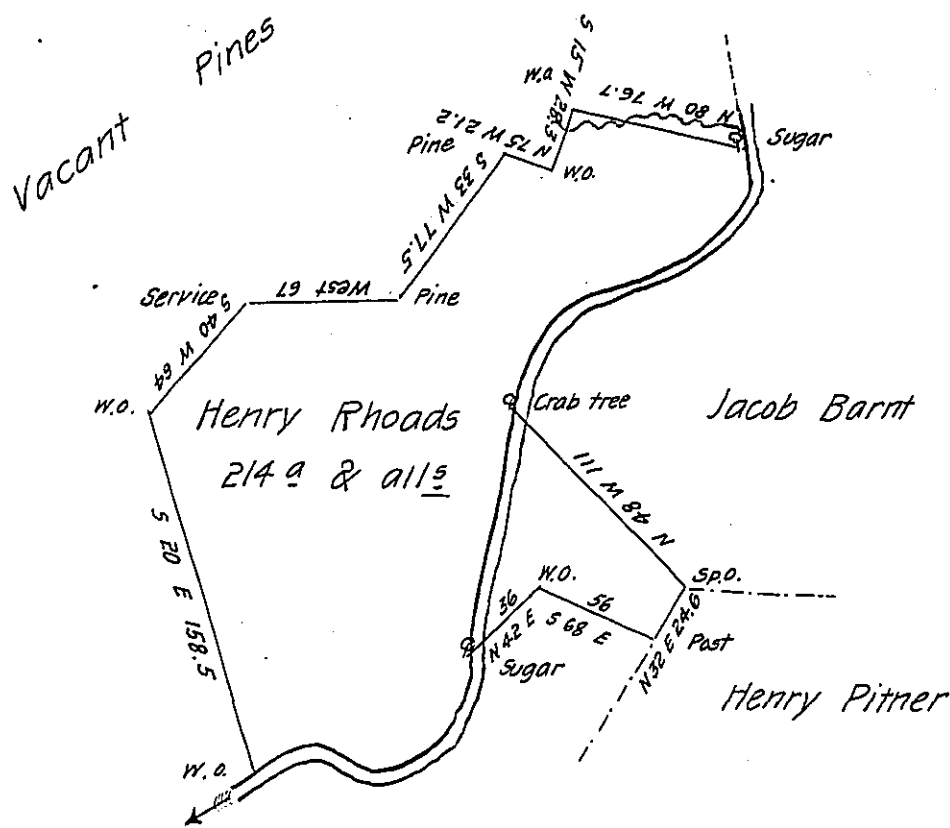


Courses and Distances up Buffalo Lick Creek from the White Oak on the Bank to a Sugar tree.

- N 69 E 29 Perches
- S 68 E 28 d°
- N 60 E 20 d°
- N 29 E 54 d° to Sugar tree

Courses and distances from the Crab tree to the Upper Sugar tree

- N 20 E 34 Perches
- N 62 E 53 d°
- N 46 E 59 d°
- N 16 W 20 d° to Sugar tree



Vacant Hill

Situated on both sides of Buffalo Lick Creek Including Matthias Judy's Saw-Mill in Brothers Valley Township Bedford County and Surveyed the 10th day of August 1787 in Pursuance of a Warrant dated the 15th day of December 1774

for

Alexander McClean Esq^r D.S.

Thomas Vickroy -

IN TESTIMONY that the above is a copy of the original remaining on file in the Department of Internal Affairs of Pennsylvania, made conformably to an Act of Assembly approved the 16th day of February, 1833, I have hereunto set my Hand and caused the Seal of said Department to be affixed at Harrisburg, this eleventh day of September 1906

Loac B. Rosen
Secretary of Internal Affairs.